



22, TURNBERRY  
AVENUE, GOUROCK, PA19 1JA



 neillclerk  
ESTATE AGENTS





## **Description**

\* Closing date on Monday 12th August at 11am\*

Occupying a rarely available location within the sought after Trumpethill area this three bedroom SEMI DETACHED VILLA offers an ideal family home. There are impressive views beyond surrounding properties towards the River Clyde and Rosneath Peninsula. A shared section of driveway leads to an area of private driveway offering space for one car and to the garage.

Gardens extend to the front and rear. The front garden features a lawned area. There is a paved patio, lawned plot and flower beds within the rear garden. Specification includes: gas central heating and double glazing.

There is a double glazed entrance porch that leads to the hallway. The lounge is a bright and well proportioned room that overlooks the front gardens through the large picture window. This room has a feature fireplace, coving and neutral décor. Conveniently located next to the lounge is the dining kitchen. The dining area can comfortably accommodate a full sized table and chairs and has patio doors giving direct access to the garden. The kitchen has ample base and wall units with worksurfaces. There is a large walk in cupboard/pantry and a side door.

Upstairs leads to the upper landing. There are three good sized bedrooms. The family bathroom features a three piece suite including vanity wash hand basin, wc and bath with shower.

Viewing is highly recommended for this family home. EPC = D

## **Measurements**

Entrance Porch

Hallway

Lounge

4.42m x 4.70m (14'6 x 15'5)

Dining Kitchen

2.82m x 5.64m (9'3 x 18'6)

Upper Landing

Bedroom 1

2.87m x 3.94m (9'5 x 12'11)

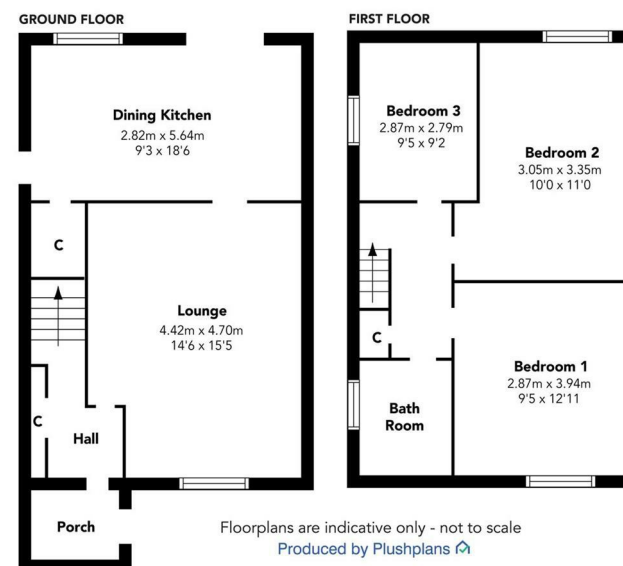
Bedroom 2

3.05m x 3.35m (10'0 x 11'0)

Bedroom 3

2.87m x 2.79m (9'5 x 9'2)

Bathroom























The  
next  
step..



To view call 01475 888400. Speak to us 7 days a week until 11pm every day to book your viewing appointment.

**House to sell or rent?**

Call 01475 888400 to book your free market appraisal.

**Require a solicitor?**

Ask us to supply a free legal quotation from Neill Clerk & Murray, Solicitors.  
[www.neillclerkmurray.co.uk](http://www.neillclerkmurray.co.uk)

Stay fully up-to-date by following Neill Clerk on:



**60 West Blackhall Street  
Greenock  
Renfrewshire  
PA15 1UY**

**t: 01475 888400**

**e: [sales@neillclerk.co.uk](mailto:sales@neillclerk.co.uk)**

**w: [www.neillclerk.co.uk](http://www.neillclerk.co.uk)**



**Agents Notes:**

These sales particulars are set out as a general outline only, issued in good faith, but do not constitute representations of fact and do not form part of any offer or contract. Any services, equipment, appliances, fittings or central heating systems have not been tested and no warranty is given or implied that these are in working order. All measurements are approximate and for guidance only.

Neither Neill Clerk Estate Agents nor any of its employees or agents has any authority to make or give any representation or warranty whatever in relation to this property.

Find all our properties at: [rightmove](https://www.rightmove.co.uk) [Zoopla](https://www.zoopla.co.uk) [onTheMarket.com](https://www.onthemarket.com) [s1homes.com](https://www.s1homes.com)